



Neonatal EEG Recording Guideline

1. Purpose of the Guideline
2. Introduction to the Guideline
3. Limits of the Guideline
4. Electrodes
 - (i) Electrode Placement
 - (ii) Electrode Choice
 - (iii) Electrode Impedance
5. Pre-test checks
 - (i) Calibration
 - (ii) Biological Calibration
 - (iii) All Electrode Check
6. Recording
 - (i) Electrode Placement
 - a) EEG Electrodes
 - b) Polygraphic Electrodes
 - (ii) Notch Filter
 - (iii) Patient Information
 - (iv) Annotations
 - (v) Montages
 - a) Full Set
 - b) Modified Set
 - (vi) Length of Recording
 - (vii) Stimulation
 - (ix) Settings
7. Post-recording checks
 - (i) Biological Calibration
 - (ii) All Electrode Check
 - (iii) Calibration
8. Factual Report Writing
9. References
- Appendix 1 – Stakeholders
- Appendix 2 – Modified Neonatal Electrode Placement
- Appendix 3 – Polygraphic Recording Electrode placements
- Disclaimer and Copyright



2. INTRODUCTION

The following guidelines should be considered as minimum standards to record an EEG on a neonate in clinical practice. These neonatal EEGs include EEG monitoring on babies with a conceptional age (CA)* of up to 50 weeks⁽¹⁾. They have been prepared by a sub committee governed by ANTA Inc. and have been presented to stakeholders within the field of Clinical Neurophysiology in Australia (see Appendix 1). A review of international guidelines was made to ensure that this ANTA Inc. Guideline is consistent with worldwide standards.

NB: *Conceptional Age (CA): The time from the mother's first day of the last menstruation to the time of recording⁽¹⁾.

3. LIMITS OF THE GUIDELINE

This guideline relates to neonatal EEG recording in clinical practice.

4. ELECTRODES

(i) Electrode Placement

Electrodes should be placed in accordance with 'The 10-20 Electrode System of the International Federation'⁽²⁾ including a ground and reference electrode where applicable.

Additional physiological recording electrodes should also be applied including electrocardiogram (ECG), electro-oculogram (EOG), submental electromyogram (EMG), movement and respiration^(1,3). (See section 6(i) for further detail).

(ii) Electrode Choice

Refer to the ANTA Inc. Routine EEG Recording Guideline⁽⁴⁾.

(iii) Electrode Impedance

Refer to the ANTA Inc. Routine EEG Recording Guideline⁽⁴⁾.

5. PRE-TEST CHECKS

(i) Calibration

(ii) Biological Calibration

(iii) All electrode Check

Refer to the ANTA Inc. Routine EEG Recording Guideline⁽⁴⁾.



international 10/20 system where possible (1, 3, 5, 6). It may be necessary to apply a reduced number of electrodes depending on the head size of the baby although a full complement of electrodes can be applied (1, 3, 5, 6). This is to ensure an adequate inter electrode distance is achieved. The minimum electrodes which should be applied are Fp2, C4, T4, O2, Fp1, C3, T3, O1, Fz, Cz, Pz, A2 and A1(mastoid electrodes) (5, 6). A modified version of the 10/20 Electrode Placement system for neonatal recording may include repositioning prefrontal electrodes a further 10% posteriorly (5). (See Appendix 2 below).

b) Polygraphic Electrodes

Neonatal EEG recording should routinely include but not be limited to Electrocardiogram (ECG), Electro-oculogram (EOG), sub-mental Electromyogram (EMG) and Respiratory (Resp) monitors (1, 3, 5).

Refer Appendix 3 below for further details.

(ii) Notch Filter

A 50Hz notch filter should only be used after all other methods of eliminating mains interference, such as reduction of electrode impedances and/or appropriate earthing and positioning of mains equipment, have been fully explored (7). If a notch filter is used this should be documented within the factual report. A period of recording without the 50Hz notch filter should be recorded if the 50Hz notch filter is used.

(iii) Patient Information

Additional patient and clinical information is required for recording EEG in neonates (3, 5) which shall include but not be limited to:

- Conception and gestational age
- Medical history (e.g. asphyxia, intra ventricular haemorrhage)
- History of abnormal movements or events – detailed features of events, circumstances or precipitants
- Conscious state
- Apgar score
- Mechanical ventilation
- Cooling protocol if cooled
- Head circumference
- Time of last feeding.

Refer to ANTA Inc. EEG Guidelines for minimum patient information - section 6(i).

Association of Neurophysiology Scientists of Australia Inc.

(also known as ANSA, formerly ANTA)

ABN: 80 872 615 302

IARN: A0821425J

www.ansa.org.au



- Behaviour/movements (gross and subtle)
- Physiologic parameters (changes in oxygen saturation, heart rate etc)
- Administration of medication (time and type)
- Passive eye opening/closure
- Reactivity to stimuli from the environment
- Features of clinical events
- Position of the child (e.g. lying on the right side against mother)
- External influences on the recording (artefacts from respirator, BP monitor, IV infusions).

(v) Montages

a) When a full set of electrodes have been applied, montages for neonatal EEG recordings should not differ to the routine EEG practice. Refer to the ANTA Inc. Routine EEG Recording Guideline⁽⁴⁾.

b) When a modified 10/20 Electrode Placement System is used for neonatal recording a modified wide placement montage is used.

Example of modified neonatal EEG recording montage where F2 and F1 are placed 10% posteriorly to Fp2 and Fp1. This suggested montage is adapted from the recommended montage from Mizrahi⁽⁵⁾.

F2 – C4	A2 – T4
C4 – O2	T4 – C4
F1 – C3	C4 – Cz
C3 – O1	Cz – C3
	C3 – T3
F2 – T4	T3 – A1
T4 – O2	
F1 – T3	ECG
T3 – O2	Respiration
	Submental EMG
Fz – Cz	EOG
Cz – Pz	

(vi) Length of recording the neonatal recording should include both awake and sleep cycles⁽⁶⁾. A minimum recording of 60 minutes should be performed^(3, 6, 8).

(vii) Stimulation

Tactile, auditory and flash stimuli should be applied toward the end of the recording and reactivity noted in the annotations^(1, 3, 8).

(ix) Settings

Refer to the ANTA Inc. Routine EEG Recording Guideline⁽⁴⁾.

A slower display speed of 15mm/second or 20 seconds per page^(5, 6) may be useful to identify specific neonatal complexes.

Association of Neurophysiology Scientists of Australia Inc.

(also known as ANSA, formerly ANTA)

ABN: 80 872 615 302

IARN: A0821425J

www.ansa.org.au



(ii) All electrode check

(iii) Calibration

Refer to the ANTA Inc. Routine EEG Recording Guideline⁽⁴⁾.

8. FACTUAL REPORT

Refer to the ANTA Inc. Routine EEG Recording Guideline⁽⁴⁾.

Association of Neurophysiology Scientists of Australia Inc.

(also known as ANSA, formerly ANTA)

ABN: 80 872 615 302

IARN: A0821425J

www.ansa.org.au



the Practice of Clinical Neurophysiology: *Guidelines of the International Federation of Clinical Physiology* (EEG Suppl. 52).

2. Klem, G., Luders, H., Jasper, H., Elger, C. (1999). The ten-twenty electrode system of the International Federation. *Recommendations for the practice of Clinical Neurophysiology: Guidelines of the International Federation of Clinical Physiology*. EEG Suppl. 52.
3. American Clinical Neurophysiology Society Guideline 2: Guideline Two: Minimum Technical Standards for Pediatric Electroencephalography, 2006.
<http://www.acns.org/> .
4. ANTA Inc. Routine EEG Recording Guideline, (2013). <http://www.anta.asn.au/> .
5. Mizrahi, E. (1986). Neonatal electroencephalography: Clinical features of the newborn, techniques of recording, and characteristics of the normal EEG. *American Journal of EEG* 26:81-103.
6. André, M., Lamblin, M., d'Allest, A., Curzi-Dascalova, L., Moussalli-Salefranque, F., Nguyen The Tich, S., Vecchierini-Blineau M., Wallois, F., Walls-Esquivel, E., Plouin, P. (2010). Electroencephalography in premature and full-term infants. Developmental features and glossary. *Neurophysiologie Clinique/Clinical Neurophysiology*: 40, 59—124.
7. Ebner, A., Sciarretta, G., Epstein, C., Nuwer, M. (1999). EEG instrumentation. *Recommendations for the Practice of Clinical Neurophysiology: Guidelines of the International Federation of Clinical Physiology*. EEG Suppl. 52.
8. Flink, R., Pedersen, B., Guekht, A., Malmgren, K., Michelucci, R., Neville, B., Pinto, F., Stephani, U., Ozkara, C. (2002). Guidelines for the use of EEG methodology in the diagnosis of epilepsy. International League Against Epilepsy: Commission report. Commission on European Affairs: Subcommission on European Guidelines. *Acta Neurol Scand*, 106:1-7.

Association of Neurophysiology Scientists of Australia Inc.

(also known as ANSA, formerly ANTA)

ABN: 80 872 615 302

IARN: A0821425J

www.ansa.org.au



Nagarajan. L., Palumbo. L., Ghosh. S. (2012) Brief electroencephalography rhythmic discharges (BERDs) in the neonates with seizures: Their significance and prognostic implications. *Journal of Child Neurology* 26 (12), 1529-1533.

Nagarajan. L., Palumbo. L., Ghosh. S. (2011) Classification of clinical semiology in epileptic seizures in neonates. *European Journal of Neurology*: 16, 118-125.

Nagarajan. L., Palumbo. L., Ghosh. S. (2010) Neurodevelopmental outcomes in neonates with seizures: A numerical score of background electroencephalography to help prognosticate. *Journal of Child Neurology* 25 (8), 961-968.

Pisani. F., Copioli. C., Di Gioia. C., Turco. E., Sisti. L. (2008) Neonatal seizures: Relation of ictal video-electroencephalography (EEG) findings with neurodevelopmental outcome. *Journal of Child Neurology* 23(4) 394-398.

Association of Neurophysiology Scientists of Australia Inc.

(also known as ANSA, formerly ANTA)

ABN: 80 872 615 302

IARN: A0821425J

www.ansa.org.au



- ANIA Inc. Members
- Document Development Committee
- Document Development Committee Advisory Group
- Other interested parties

Original Document

Document development subcommittee

Mary Lynch, Joanne Wex, Holly Campbell, Anna Exley, Santhi Chigurupati, Malcolm Corkhill, Kate Martin, Emma Fetherston, Amy Lofts, Vicky Grant.

Advisory Committee

The document development committee identified a group of key stakeholders to view the draft documents for feedback. The advisory group was made up of technologists, scientists and neurologists working in the neurophysiology industry around Australia. The comments from this group were considered, compared against the reference material and included where appropriate.

Members Feedback

On completion of the final draft the document was put out to all members of ANTA Inc. for feedback. The comments from members were considered, compared against the reference material and included where appropriate.

Guideline Acceptance

This Guideline was accepted by members in July 2014.

Amendments

2016 May Disclaimer and Copyright statements added.

2023 July Rebranded to ANSA Inc.

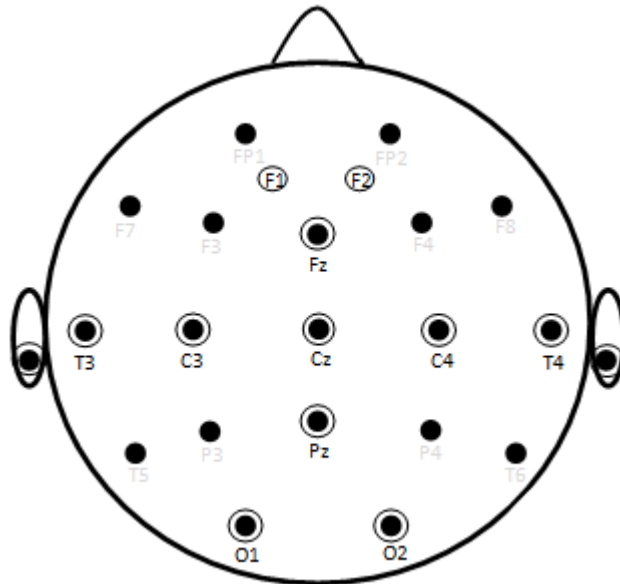


Figure 1. Modified neonatal EEG electrode placement



ECG: Electrodes can be placed on the left side of the chest (referential recording) or both sides of the chest (bipolar recording). Lead 1 ECG ⁽⁵⁾. (Figure 2)

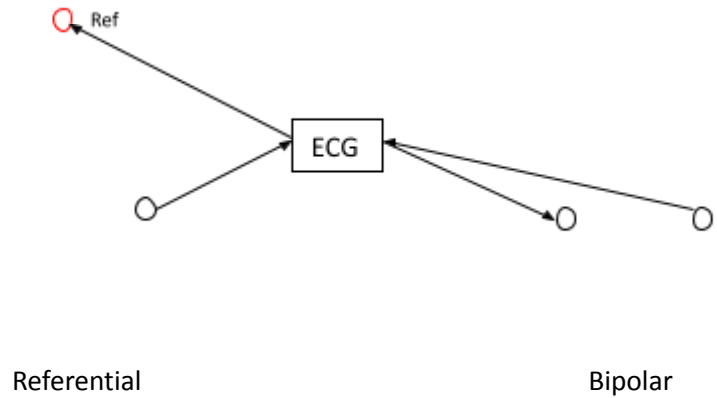


Figure 2. ECG electrode placement



Figure 3. EOG electrode placement - combined lateral and vertical eye movement

or refer outer canthus to mastoid either ipsilaterally or contralaterally ⁽⁵⁾. (Figure 4)

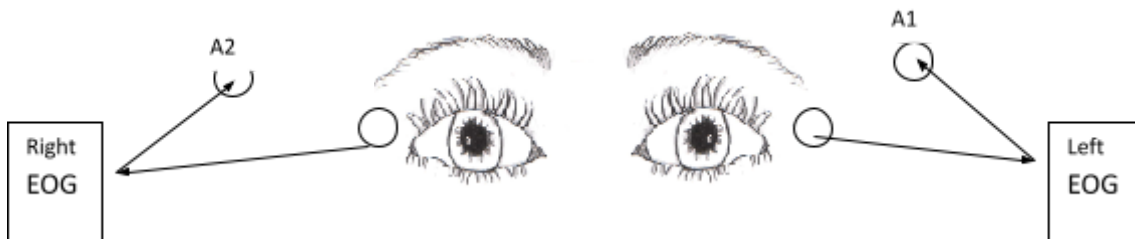


Figure 4. EOG electrode placement - lateral eye movement

or right outer canthus to mid nasion ⁽³⁾. (Figure 5)



Figure 5. EOG electrode placement - unilateral combined lateral and vertical eye movement

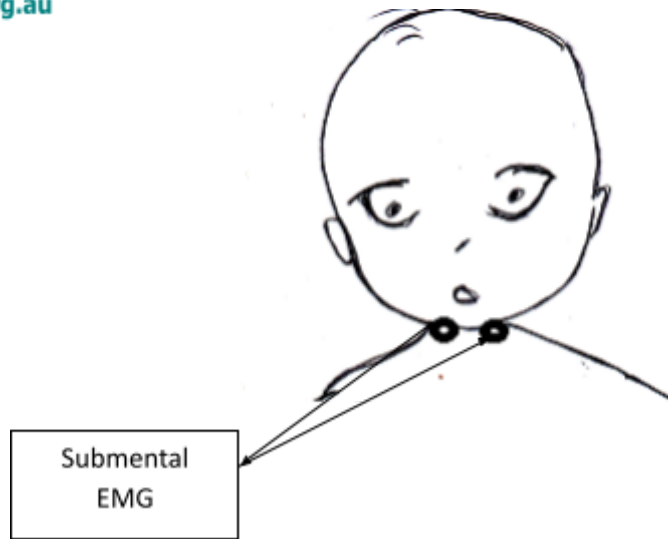


Figure 6. Submental EMG electrode placement

Respiratory: Respiratory transducer recording thoracic abdominal movements ⁽¹⁾ two centimetres above umbilicus ⁽⁶⁾ or two electrodes placed 2cm apart at the base of the ribcage over the diaphragm. (Figure 7)

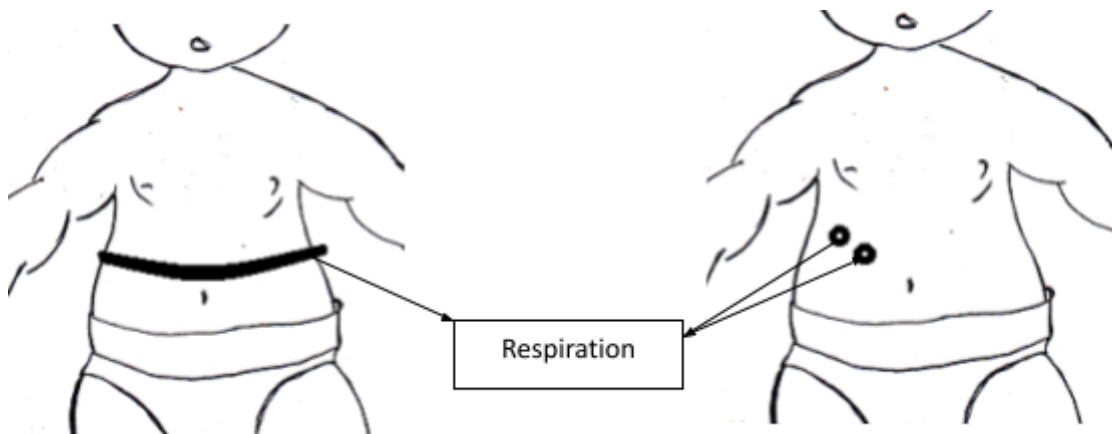


Figure 7. Resp electrode placement

Association of Neurophysiology Scientists of Australia Inc.

(also known as ANSA, formerly ANTA)

ABN: 80 872 615 302

IARN: A0821425J

www.ansa.org.au



- (ii) If you rely on the information from this guideline you are responsible for ensuring by independent verification its accuracy, currency or completeness. You are also responsible for making sure it meets your specific requirements. ANTA Inc. does not warrant or take responsibility for the accuracy, currency or completeness.
- (iii) You acknowledge that such information and materials may contain inaccuracies or errors and we expressly exclude liability for any such inaccuracies or errors to the fullest extent permitted by law.
- (iv) The information and data in this guideline is subject to change without notice.
- (v) This guideline may include links to websites. These linked websites will have their own terms and conditions of use and you should read and familiarise yourself with these terms and conditions.
- (vi) ANTA Inc. may revise this disclaimer at any time including by updating this page

Copyright ©

- (i) You are welcome to use this guideline and the information contained on it.
- (ii) All material in this guideline is protected in Australia under the *Copyright Act 1968 (Cth)*.
- (iii) You are permitted to either electronically save or print out parts of this guideline for your own information, research or study but are prohibited from using the information for any commercial purpose.
- (iv) You are not permitted to modify copy in any way from the form in which it appears in this guideline.
- (v) You must not republish any material contained in this guideline either on another web site, or in any other medium, print, electronic or otherwise without seeking permission to do so. Subject to *Copyright Act 1968* all such use may only be authorised in writing by the copyright owner (ANTA Inc.)
- (vi) Apart from this provision and uses permitted under the *Copyright Act 1968*, all other rights are reserved.